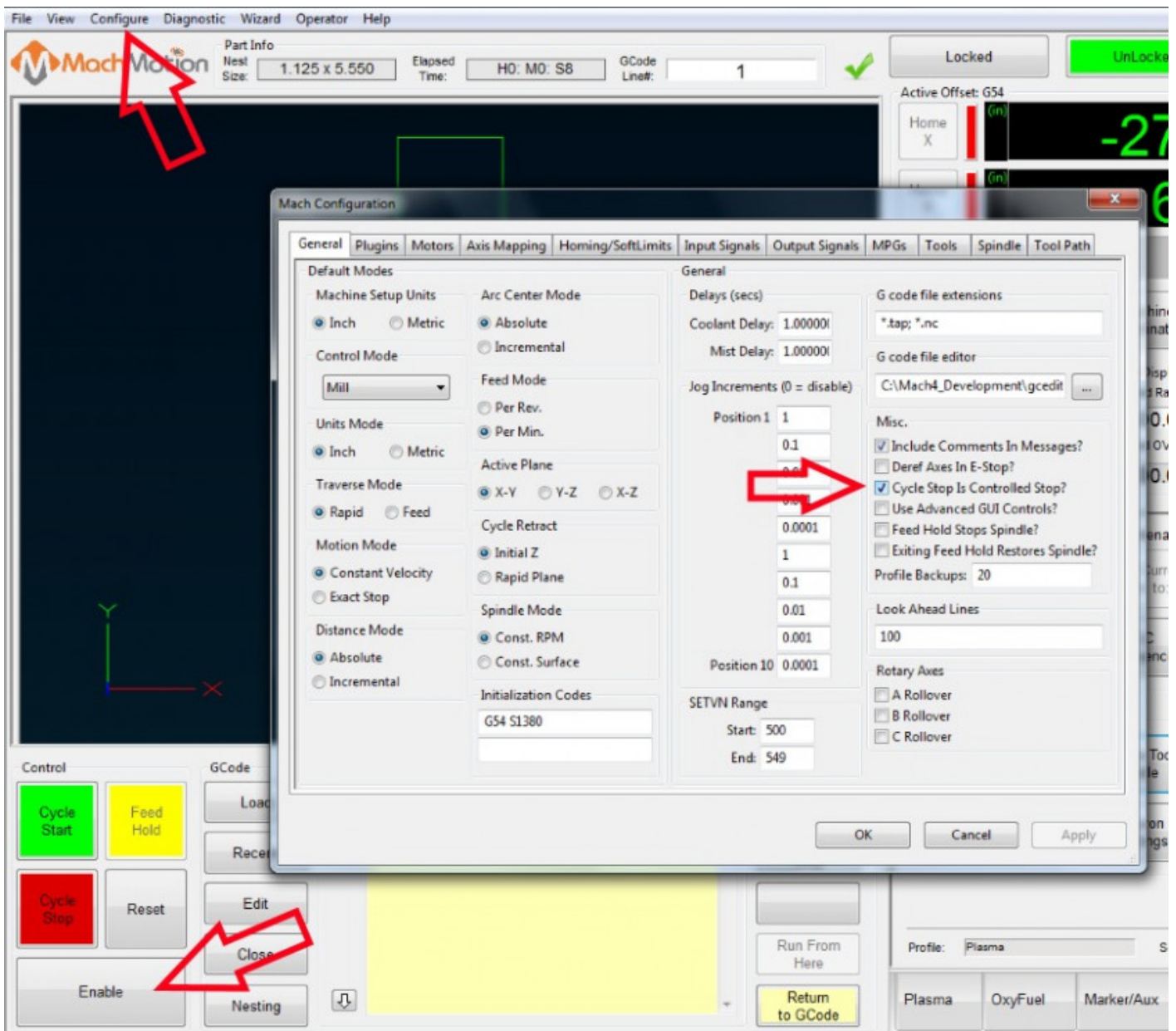


Machine Slams on Stop Command-Mach4

If you do a stop and it stops instantly and is hard on the machine, you can turn it into a controlled stop so it slows down to a stop. This can have negative side effects in certain situations where you need it to stop sooner, but the emergency stop button should be used for true emergency situations.

To set a controlled stop, select the configure menu option (system must be in disabled state), then mach... and set the controlled stop setting with a check mark. This will then use the motor accel/decel values for stopping:



Keywords: Cycle stop, harsh, slam, slams, instant