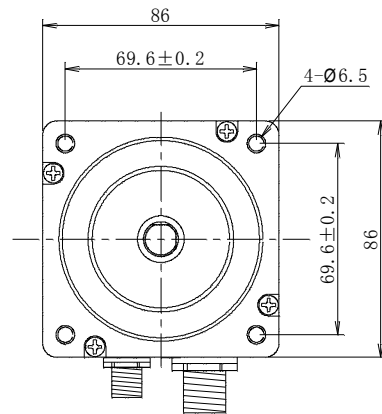
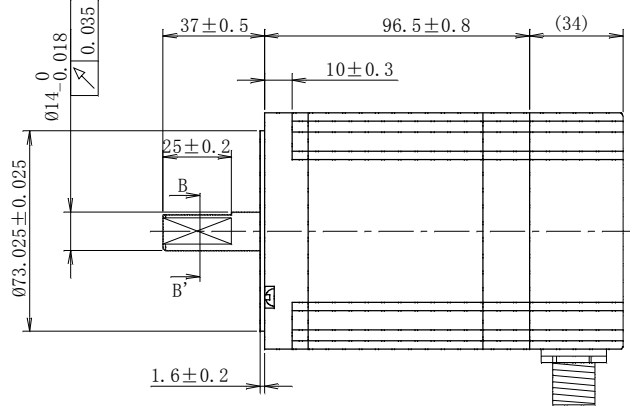
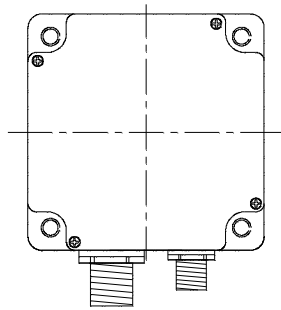


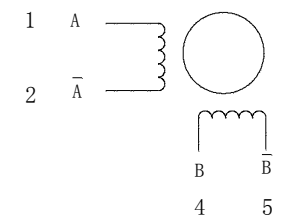
符合RoHS指令要求  
 CONFORM TO RoHS INSTRUCTIONS

端子线序 PIN NO.	1	2	3	4	5
颜色 COLOR	A	$\bar{A}$	GND	B	$\bar{B}$

A  
B



电机接线图/WIRING DIAGRAM



电气特性参数/ELECTRICAL PARAMETER

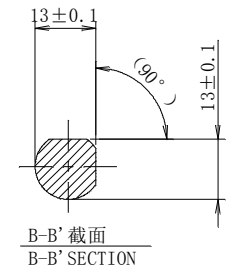
步进角/STEP ANGLE	1.8° ±5%
相数/NO. OF PHASES	2
额定电压/RATED VOLTAGE	2.4 V
额定电流/RATED CURRENT	6.0 A
电阻/RESISTANCE	0.4 ohm±0.1 AT 25° C
电感/INDUCTANCE	3.4 mH±20% AT 1kHz, 1Vrms
保持力矩/HOLDING TORQUE	6.9N.m(977oz. in) ±10%. 注/NOTE) 1
运行力矩 (AT --PPS) RUNNING TORQUE(AT --PPS)	--- 以上/MIN. (--V. DC, --A/相 (PHASE), --相励磁/EX)
绝缘耐压/DIELECTRIC STRENGTH	1500V A.C 1分钟/MINUTE
绝缘电阻/INSULATION RESISTANCE	100 MΩ 以上/MIN.
绝缘等级/INSULATION CLASS	CLASS B
温度上升/TEMPERATURE RISE	80K MAX. 注/NOTE) 2
转子惯量/ROTOR INERTIA	1580g.cm <sup>2</sup> (10. loz. in <sup>2</sup> )
重量/WEIGHT	约/APPROX. 3040克/g(107oz)
允许轴向负载/ALLOWABLE THRUST LOAD	60N
允许径向负载/ALLOWABLE RADIAL LOAD	220N (轴端/ON THE SHAFT END)
运行环境温度/OPERATION AMBIENT TEMP.	-20° C----+50° C
运行环境湿度/OPERATION AMBIENT HUM.	15%----90%
寿命/LIFE	5000小时/HOURS 注/NOTE) 3

- 备注/NOTE):
1. 额定电流, 两相同时通电/AT RATED CURRENT, TWO PHASES ON.
  2. 热阻法: 电机安装在258\*258\*T5的铝板上, 电机线圈两端通额定电压, OPSS /MEASURED BY RESISTANCE METHOD. MOUNT WITH ALUMINUM HEAT SINK 258\*258\*T5 AT TWO WINDING BE EXCITED BY RATED VOLTAGE, OPSS, 2PHASE ON.
  3. 寿命测试条件: 整步, 运行速度为500PPS, 轴承的表面温度不超过70° C LIFE TEST CONDITION: 2PHASE EXCITING, FULL STEP, AT 500PPS. STARTING PULSE, BEARING TEMPERATURE SHOULD BE 70° C MAX.

编码器接线方式  
 ENCODER LEAD WIRE

线序 PIN. NO	信号 SIGNAL
1	+5V
2	GND
3	A+
4	A-
5	B+
6	B-
7	SHIELD
8	---

分辨率/RESOLUTION: 1000ppr

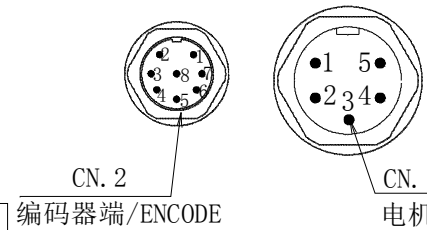


励磁顺序 (2相励磁) VS. 旋转方向  
 EXCITING SEQUENCE (TWO PHASES)  
 VS. DIRECTION OF ROTATION

STEP	A	B	$\bar{A}$	$\bar{B}$	
1	+	+	-	-	CCW
2	-	+	+	-	
3	-	-	+	+	
4	+	-	-	+	CW

从安装面看为顺时针方向  
 CLOCK WISE VIEW FROM MOUNTING SIDE

C  
D



**已受控**

黑色端盖/BLACK ENDBELL

编码器端/ENCODE

电机端/MOTOR

CONFIRMED&ACCEPTED BY CUSTOMER (客户确认&接受)				型号/MODEL	
COMPANY CHOP&SIGNATURE (盖章&签名)				HEM-34D2407-58ED	
B	2020-10-21	---	图面修正	XuCheng	
A	2020-07-21	---	初版	XuCheng	
一般公差 TOLERANCE	±0.3/±3°	版本 REV.	年月日 DATE	变更番号 ECO NO.	变更内容 REVISIONS
制图/DRAWN	XuCheng/2020-10-21	比例 SCALE	1:2	品名 STEPPIING MOTOR SPEC	三视图 THIRD ANGLE PROJECTION
设计/DESIGNED		单位 UNIT	mm		
审核/CHECKED		汉姆电机/HIGH-EFFICIENCY MOTORS CO., LTD.			页 SHEET
承认/APPROVED					1/1

E